

COATING MASTER[®]

FCD1000

***Non contact, non scattering,
automated coating.***

NEW

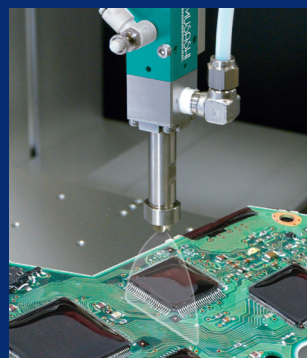


Twin

Equipped with dispense system

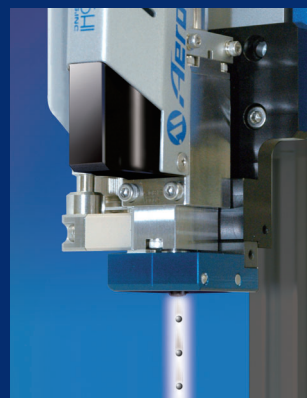
Consistent, non scattering,
widely high speed dispensing

CV-10



Spot coating by non contact
high speed jet.

AeroJet[®]



Feature

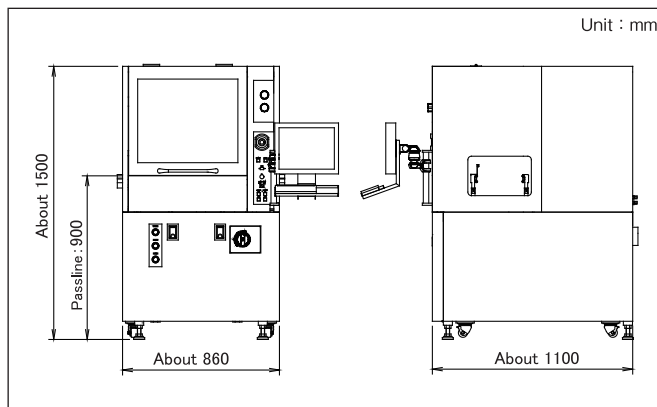
- Masking is unnecessary. Feely control from spot coating to wide range coating without dispersion.
- Excellent dispense repeatability with standard equipped image recognition system.
- Corresponds M size substrates (Max. 250x330mm).
- Corresponds combining inline type and loader/unloader type.

Specifications

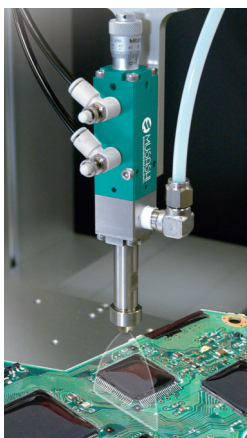
Work size	Wide : 30mm~250mm Length : 50mm~330mm
Height of parts	Max : 50mm
Speed	XY-axis:Max.1,000mm/sec. Z-axis:Max.500mm/sec.
Power supply	200V, 20A
Supply air pressure	500kPa
Maximum transportable weight	5kg
Direction of flow	Left to right
External dimensions	(W) 860mm× (D) 1,100mm× (H) 1,500mm
Weight	350kg
Dispenser that can be used	CV-10
Control method	AeroJet
Control method	Computer-controlled
Program input method	MuCAD III
Standard equipment function	Camera for image recognition
	Head rotation mechanism
	Nozzle soaking Pod and dummy-shot Pod
	The downstream direction exhaust system
Option	Corresponding 2 HEADS
	Dispensing width control function

*1: The work size that can correspond dependson the selected option. Please inquire for details.

External dimensions

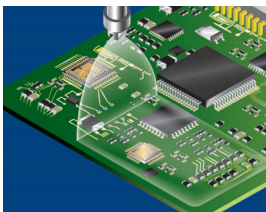


Dispense system



Spray coating system CV-10

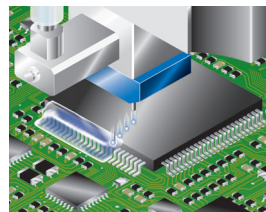
- Non scattering, widely high speed dispensing.
- Constant thin-film dispensing against uneven substrate.



Non contact coating system

AeroJet®

- High speed spot coating by 270shot/sec.
- Ease of maintenance and 4times durability enhanced.



Safety precautions

Please read the instruction manual carefully before use to ensure correct and safe usage.

*These specifications are subject to change without any notice.

*The copyright of this catalog belongs to our company. Reproduction and distribution of the pictures, illustrations and any other information in this catalog to any other media without prior written permission are strictly prohibited; doing so will result in copyright infringement.

MUSASHI ENGINEERING, INC. (headquarters) is certified and registered according to the ISO 9001 Quality Management System and the ISO 14001 Environmental Management System.



MUSASHI
ENGINEERING, INC.

<http://www.musashi-engineering.com>

World Leading Dispenser
MUSASHI ENGINEERING, INC.

HEAD OFFICE

8-7-4, Shimorenjaku, Mitaka, Tokyo, 181-0013, Japan TEL : (81)422-76-7111 / FAX : (81)422-76-7122

BRANCH

TOKYO, OSAKA, NAGOYA, SENDAI, FUKUOKA, SAITAMA, NAGANO, EAST-KANTO, AKITA, KANAZAWA

SINGAPORE	10 Ubi Crescent # 05-24 Ubi Techpark Lobby B Singapore 408564 TEL : (65)6258-2422 / FAX : (65)6258-4844
THAILAND	No.12 Soi Bangna-Trad 25, Bangnanuea, Bangna Bangkok, 10260 Thailand TEL : (66)2-022-9015 / FAX : (66)2-769-5450
INDONESIA	Jl. MH. Thamrin, Robson Square, Block A-15, Lippo Cikarang, Bekasi 17550, Jawa Barat, Indonesia TEL : (62)21-8990-5005/ FAX : (62)21-8990-5004
GERMANY	Marcel-Breuer-Str. 15, D-80807 Munich, Germany TEL : (49)89-321996-06 / FAX : (49)89-321996-07
KOREA	(902 No. 9 F. #C, Korea Bio Park.) 700, Daewangpangyo-ro, Bundang-gu, Seongnam-si, Gyeonggi-do 13488, Korea TEL : (82)31-702-3811 / FAX : (82)31-702-3881
TAIWAN	8F-2, No. 158, Sec. 2, Gongdao 5th Road, Hsinchu, Taiwan 30070 TEL : (886)3-572-9200 / FAX : (886)3-572-9300

CHINA

HONG KONG	Unit 1706, 17/F., Greenfield Tower,(South)Concordia Plaza, No.1 Science Museum Road, T.S.T.East, Kowloon, H.K. TEL : (852)2620-5799 / FAX : (852)2620-5771
SHANGHAI	A-120 Room, No.525 Xian Feng Street (No.55 Jin Yu Road), Min Hang, Shanghai, China TEL : (86)21-6446-7881 / FAX : (86)21-6446-7882
SHENZHEN	Room 702, West Tian'an Tech Plaza II, Tian'an Cyber Park, Futian District Shenzhen, China TEL : (86)755-8346-6822 / FAX : (86)755-8346-6866
TIANJIN	Room 1206, Sino Ocean International Center, No. 40 Huachang Road, Hedong District, Tianjin TEL : (86)22-5856-2051
SUZHOU	Room 1010, No.188 Wang Dun Road, GENWAY BUILDING, Suzhou City Industrial estate District, Jiangsu, CHINA TEL : (86)512-6878-4428 / FAX : (86)512-6878-4438