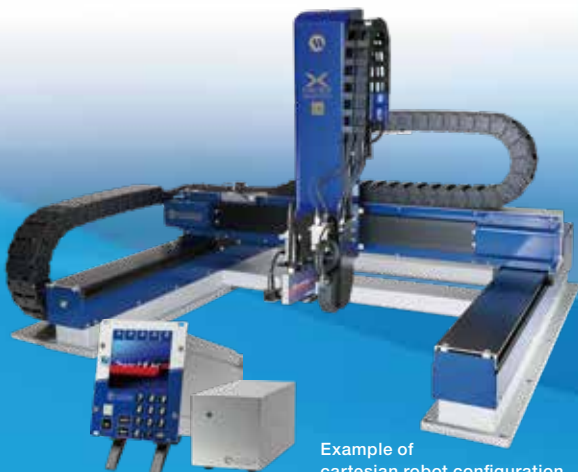


# Super Hi Jet™

**NEW**

*More enhanced JET  
For high viscosity  
applications.*



Example of cartesian robot configuration

For viscosity ranges up to  
**1,000,000mPa·s**

Excellent landing position accuracy

Rod replacement possible

## Dispensing applications

Attaching diaphragms  
to speakers



UV dispensing  
on camera modules



Dispensing of solder paste  
to PCBs



## Head features

- Hassle-free maintenance.
- Thin & small. Can be used with multi-head systems.
- Designed for use with UV, solder paste, silicone and other materials.



## Controller features

### Excellent operability

- Large 3.5-inch color screen.
- Numeric keypad on front panel.
- Available in three languages: Japanese, English, Chinese.



### Comprehensive functionality

- Allows digital control of liquid delivery pressure.
- Memory function for dispensing parameters.

### Mountable on automatic machines

- Can be rack mounted. (Suits 19-inch sub-racks, 3Ux21HP)
- USB and RS232C communication ports for sending/receiving all parameters and remote control operation.



## Specifications

Product name	Non-contact JET dispenser SUPER HI JET™
Model	MJET-S-HI
Dispense controller's model	MJET-S-CTR-RM (head controller) TCU-DC24-1 (temperature control controller)
Controller power supply unit	MJET-S-CTR-RM-PW-A
Dispensing system	Jet system
Control system	Microcomputer digital control system
Applicable liquid materials	UF material, Ag paste, sealant, epoxy resin, grease, etc.
Applicable syringe	5 to 70 mL syringes, tank
Temperature setting range	10.0 to 80.0°C
Dispensing modes	LINE/MAN, LINE/SET, DOT/MAN, DOT/SET
Operating frequency	300 Hz (maximum burst frequency: 500 Hz)
Main functions	Syncro Speed™, multi-channel presets, Japanese-English-Chinese display switching, USB communications, RS-232C communications
Channel number	100CH
Input signals	Dispense signal, channel switching, dispensing mode switching
Output signals	Dispensing completion, in-dispensing, error, alarm, busy, power on
Rated voltage and frequency	AC100-240V 50/60Hz (head controller; temperature control controller)
Power consumption	MAX: 75 W (head controller) MAX: 68 W (temperature controller)
Conformity standards	EU RoHS, CE-marking (Low Voltage Directive, EMC Directive)
Dispense head unit dimensions	W89.5×D119.5×H125mm
Dispense head unit weight	0.7kg
Head controller dimensions	W106×D171.3×H128.4 mm Suits 19-inch sub-rack (3Ux21HP)
Head controller weight	1.6kg
Controller power supply unit dimensions	W140×D239×H108mm
Controller power supply unit weight	2.0kg
Temperature controller dimensions	W120×D140×H90 mm
Temperature controller weight	1.0kg

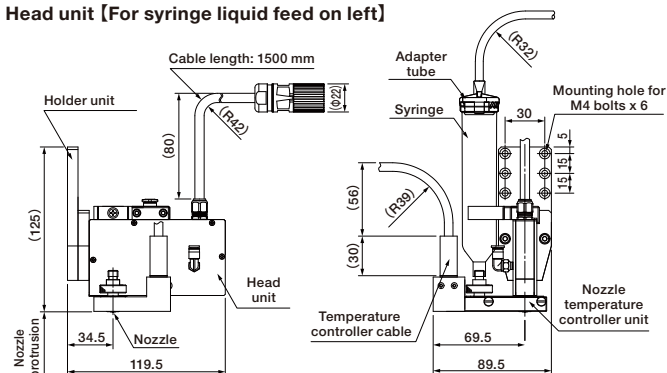
Compatible with reactive hot melt (PUR)

**HOT MELT**  
*Super Jet™*

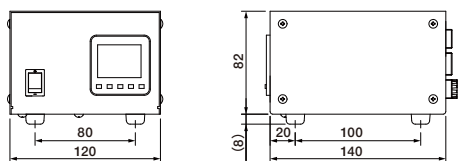


## Outside drawings

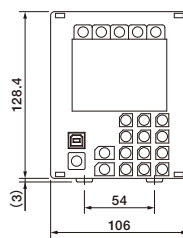
### Head unit [For syringe liquid feed on left]



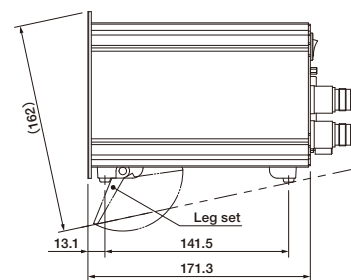
### Temperature control controller



### Head controller



### Measurement unit (mm)



### Head controller power supply unit

